

Ledner receives Medal of Honor at AIA LA Design Conference in Destin

Architects travelled to Destin, Florida to participate in the 2009 AIA Louisiana Design Conference events in August. Highlights of the event were the awarding of the Medal of Honor; the announcement of winners of the annual design competition, and the conference Monday night beach party at the beautiful San Destin Golf & Beach Resort in Destin, Florida. The event also included a trade show with some 48 vendors displaying the latest in architectural products and tools.

Albert Charles Ledner, AIA – Emeritus receives prestigious Medal of Honor

Albert Charles Ledner, AIA – Emeritus, received the prestigious Medal of Honor from the Louisiana chapter of the American Institute of Architects (AIA LA) at its Design Conference Honors Luncheon in San Destin, Florida on August 4. The Medal of Honor is given by AIA Louisiana in recognition for outstanding service in the field of architecture and to the community.

Ledner graduated from Tulane University School of Architecture in 1948. He worked for Buford Pickens upon graduation and then

| continued on page 2 |



MEDAL OF HONOR... Albert C. Ledner, at right, receives Medal of Honor from E. Ean McNaughton, FAIA, During the conference's honors luncheon.



E.W. "Will" Tregre, AIA

Tregre to lead AIA LA new Executive Committee

E.W. "Will" Tregre, AIA, will assume the presidency of the AIA Louisiana Board of Directors on January 1, 2010.

Tregre, of New Orleans, previously served as First Vice President/President-Elect. Stephen Maher, AIA, of the Baton Rouge firm Ritter Maher Architects, LLC, was elected as First Vice President/President-Elect.

Other officers elected at the meeting include William "Bill" Gary, AIA, of the Shreveport firm William L. Gary, APAC, as Vice

President – District A; David Cronrath, AIA, of Baton Rouge & LSU College of Art and Design, as Vice President – District B; Mark F. Stielper, AIA, of the Lafayette firm MBSB Group, as Vice President – District C; Norbert L. Langlinais, AIA, of the Lafayette firm D&B Architecture, as Secretary/Treasurer. Past President Christian R. Elbersen, AIA, of the Shreveport firm Somdal Associates is also a member of the Executive Committee.

INSIDE:

(Click to go to page)

- 2** Patron Award
- 3** Design Conference Awards
- 12** Scenes from Design Conference
- 13** Team BeauSoleil tops in market miability
- 14** Ronald B. Blicht elected regional director of NCARB
- 14** Construction code changes listed

Medal of Honor

| continued from page 1 |

went to Taliesin in the fall of 1948. He was offered a chance to stay there on a scholarship offer by Frank Lloyd Wright, but opted to return to New Orleans. In 1950 he returned to New Orleans where his first completed project, the Goldate residence, was published nationally in *House Beautiful* in July 1952. The Goldate residence was both modern and revolutionary in a city still dominated by traditional Beaux Arts practice. Ledner said, "I couldn't resist the chance of doing my first house. So I came back in December of '48 and...that's it. Things developed from there. One of the interesting things is, I've never been able to try to repeat myself. My whole approach has been relating the house to the client. And each client differs and so the house differs."

Ledner's accomplishments include over 100 projects, with most being located in the greater New Orleans area and have been a positive contribution to the state of Louisiana. Of the projects located outside of Louisiana, his design of buildings for the National Maritime Union (NMU) led to projects from San Francisco to San Juan, culminating in his designs for the National Headquarters building for the NMU, the Seaman's Training School and Dormitory and the Joseph Curran Annex Building (now the Maritime Hotel), all located in New York City. The profile of the union and visibility of modern maritime commerce's progress were critically advanced by Ledner's acclaimed projects.

Outside of his prolific practice, Ledner maintained a relationship with Tulane University, teaching design as well as participating in lectures and symposia on modern architecture. In addition, his activities included chairing a publication for AIA New Orleans entitled "A Guide to New Orleans Architecture." Published in 1974, the guide remains a critical resource to all interested in the architectural heritage of New Orleans.

Patron Award

Louisiana Architecture Foundation's Patron of Architecture Award

The Make It Right Foundation (MIR) received the Louisiana Architecture Foundation's Patron of Architecture Award on August 4 for its role in being a catalyst for redevelopment of the Lower 9th Ward in New Orleans and for its focus on sustainable design.

Chris Elbersen, president

of the American Institute of Architects, Louisiana chapter, presented the award to Tom Darden, executive director of the Make It Right Foundation at the AIA Louisiana Design Conference Honor Awards ceremony, held in SanDestin, Florida.

The Patron of Architecture



AIA Louisiana President Chris Elbersen presents the Patron Award to Tom Darden, representing the Make It Right Foundation.

Award recognizes non-architect individuals, corporations, organizations and groups whose good works have encouraged, fostered or promoted public understanding and appreciation of quality in Louisiana architecture.

In December 2006, actor Brad Pitt convened a group of experts in New Orleans to brainstorm building sustainable and affordable housing on a large scale to help families in need in the wake of Hurricane Katrina. That group became the Make It Right Foundation (MIR) in 2007, with the goal of becoming a catalyst for redevelopment of the Lower 9th Ward. To that end, MIR committed to building a neighborhood of 150 safe and healthy homes inspired by Cradle to Cradle™ thinking, with an emphasis on high-quality design that preserved the culture of the community.

By December 2009, one hundred Lower 9th Ward families will once again be homeowners. They will be living in their old neighborhood, but in the largest concentration of energy-efficient, disaster-resilient, LEED Platinum homes designed by

world-renowned architects. At a construction cost of \$150,000 a house, these New Orleans families will be living in what the US Green Building Council has determined is the 'greenest development of single family homes in America.'

In his letter of support for the project and Make It Right's nomination, William A. McDonough, FAIA, F. Int. RIBA, wrote "I cannot think of an organization more deserving of recognition for its role as a patron of art and architecture. Especially given the program's framework of design in the support of community. What a gift to the community, the state, and the nation."

MIR's drive to build quality homes affordably has also resulted in innovations, including a MIR-designed wall section that uses less material, cuts costs and is stronger than conventional wall sections. MIR also has a patent pending on a storm water management system that uses pervious concrete and creates zero runoff. The City of New Orleans has contracted with MIR to redo two streets using this system.

Honor Awards

OneEleven & THE BELISLE BUILDING

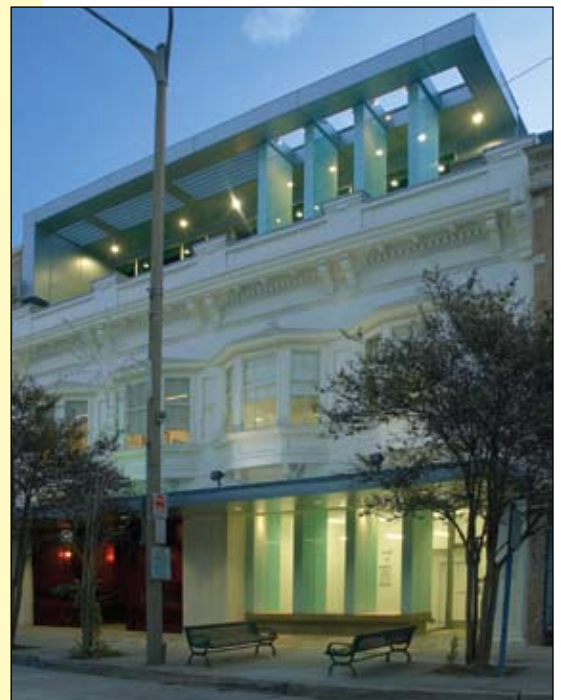
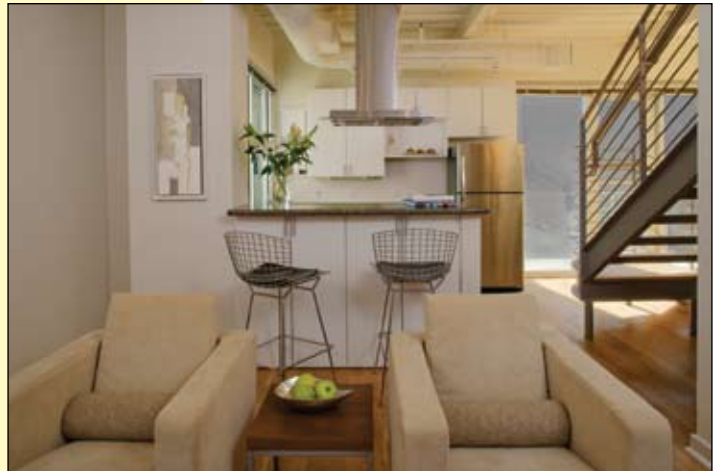
*Remson/Haley/Herpin Architects,
APAC*

OneEleven

OneEleven is a multi-use (commercial and residential) infill project in the resurging downtown area. This project had a narrow and challenging site and was carefully designed to complete/reinforce many of the design initiatives already established on the city block. The building steps back and reduces in massing to respond to the historic character and proportion of the Third Street Arts and Entertainment District. The projects also seek to activate the public realm by placing commercial/retail space on the ground floor, and varied outdoor living spaces are created for the residents.

The Belisle Building Renovation and Addition

After purchasing a 1920's two-story, Italianate building, the client hoped to use the new location to rebrand their business with a contemporary, cutting-edge image, including repurposing an existing, underutilized building while respecting the existing character. Also, the design encompasses activating the existing streetscape by providing for retail space on the ground floor and the addition of a third story to the existing building.



Honor Awards

BATON ROUGE INTERNATIONAL SCHOOL

Trahan Architects

Baton Rouge International School is the result of a new 18-acre campus master plan for an international school educating students from infancy to high school.

Site interventions transform the isolated fragments of an incongruous suburban water management strategy into a holistic expression of the landscape's hydrological system and provide a robust setting for a culture of learning.

The new hydrological system begins at an expanse of wetland at the south end of the site, an area already inundated with water from the unchecked drainage of neighboring suburban development. Cultivation of this area into a wetland exploits its ecological potential, returning it to a native habitat.

The landscape is partitioned into a series of outdoor play areas, which complement and serve the educational programs embedded within them.



Awards of Merit

NORTHSHORE EYE ASSOCIATES

Pistorius Associates, LLC

The project intent was to create a destination of healing on the owner's 40 acres of undeveloped land located along a rural corridor connecting college towns and bedroom communities. The concept of this ophthalmological clinic was to use the built environment to reinforce the essence of sight and celebrate the power of light and vision.

The owner demanded the architect to fully utilize the natural landscape by creating a resort experience that provides a healing environment for the visitor. The site offered the shelter of trees, gentle land formations, a serene pond and wildlife to view. The



structure captures that earthy essence and transports the visitor to a place of harmony and healing while he works his way through the treatment and service areas within the facility.

The structure is located on the site to encompass the surrounding landscape from all areas of the interior space. Likewise, the building itself is fractured and layered in order to capture dancing sunlight within the interior of the space as it is filtered through the surrounding tree canopies. Materials are carefully used contiguously from exterior to interior to reinforce the spectacular views of the natural landscape offered by the building.

Here the visitor escapes their cluttered environment and feels an awesome sense of arrival as they enter the medical campus. Patients are welcomed to forget the stress of a medical procedure as they experience the simplistic beauty of their surroundings and can fully appreciate the wondrous gift of vision.

Awards of Merit

BOZEMAN FISH TECHNOLOGY CENTER

*Joint Venture Of
Eskew+Dumez+Ripple And Guidry
Beazley Architects*

This new 17,000 square foot research center supports U.S. Fish and Wildlife Service studies on fish reproduction, nutrition and contaminants, as well as fish physiology and therapeutic drug research. The facility includes a new high-performance research laboratory and administration headquarters which centralizes USFWS fish technology center staff into a single structure. A small interpretive center component promotes public outreach and environmental education opportunities.

The design is organized into two wings with limited, controlled access to the research laboratories and public access to the administrative center for operational purposes and security considerations.



The design differentiates between administrative center and laboratory by cladding the former in wood (along with researchers' offices) and the latter in aluminum panels.



Awards of Merit

ARTHUR ROGER GALLERY

Wayne Troyer Architects

The primary concern in the gallery design was to highlight historic elements, while providing a clean, crisp surface on which to display artwork. Retention and revelation of masonry walls and wood columns provide the unique sense of time and place in New Orleans, while new materials create an understated drama in which to showcase installations. The main gallery features floating gypsum display walls: Existing masonry is exposed along the top, bottom, and sides, adding perceived spatial depth and the impression that the gallery itself may be an installation. Concealed lighting runs above a knife-edged cove, with a recessed track below. Existing heavy timber columns—once an elevator shaft—are a focal point at the entry: Stretched Dacron sail material between the columns is backlit for dramatic effect from the street.



A seamless, poured resin floor knits all programmatic elements together, flowing continuously throughout the space. At the passageway between old and new galleries, a surround of backlit resin panels signals a transition, contrasting against the weight of the exposed masonry wall and smooth gypsum. Sliding translucent panels provide privacy for support spaces [without adding visual weight to the gallery] and reinforce spatial continuity. Back-of-house functions are supported by custom cabinetry and shelving [idea for curio-like art display], built-in workspaces and integral lighting; in this way, the gallery's functionality as exhibition space extends beyond the main gallery room. Open slots through walls provide visual connection between workspaces and display/storage, emphasizing connections between programmatic functions.

Honorable Mention Awards

FIRST PRESBYTERIAN CHURCH

(Unrealized Project)

Trahan Architects

First Presbyterian Church is a 1750 seat sanctuary, as well as master plan support facilities on an entire city block located in the heart of historic Colorado Springs, Colorado.

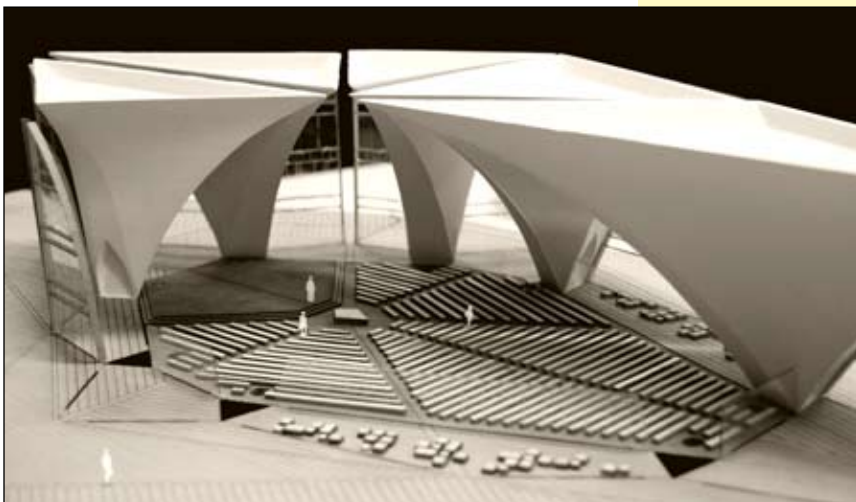
In response to existing facilities characterized by church leadership as "fortress-like" combined with a desire for a ministry focused on community outreach, a new atmosphere of accessibility permeates the master plan and sanctuary design. The experience begins at the west and south edges of the site where forbidding street walls characteristic of existing church structures are replaced by a welcoming plaza, supplemented by a bookstore, café, and generous landscaped space.

Moving toward the center of the site, the definitively secular life of the street progressively gives way to greater degrees of spiritual encounter and ultimately to sacred space. At the center of the site,



an ensemble of vaulted canopies rise and encircle, like great trees, a single room for 1750 worshippers seated on a single level. Mirroring the congregation, each canopy is an independent constituent of a larger whole, a community. Canopies ascend to a uniform plateau, a theoretical sky plane sheltering the sanctuary, its ambulatory and forming the overhangs of the exterior eave. Divisions between canopies intersect at the center of a lozenge forming a luminous star, or at times a cross, suspended above and indicating the most intense connection of the secular, or horizontal realm, and the sacred, or vertical realm.

Rather than rely on overt signs of a church, a steeple, tall roof or stained glass, the design intends to invigorate church identity through architecture that speaks about and signals its purpose through expressions produced by genuine engagement with the issues that are both fundamental and germane.



Honorable Mention Awards

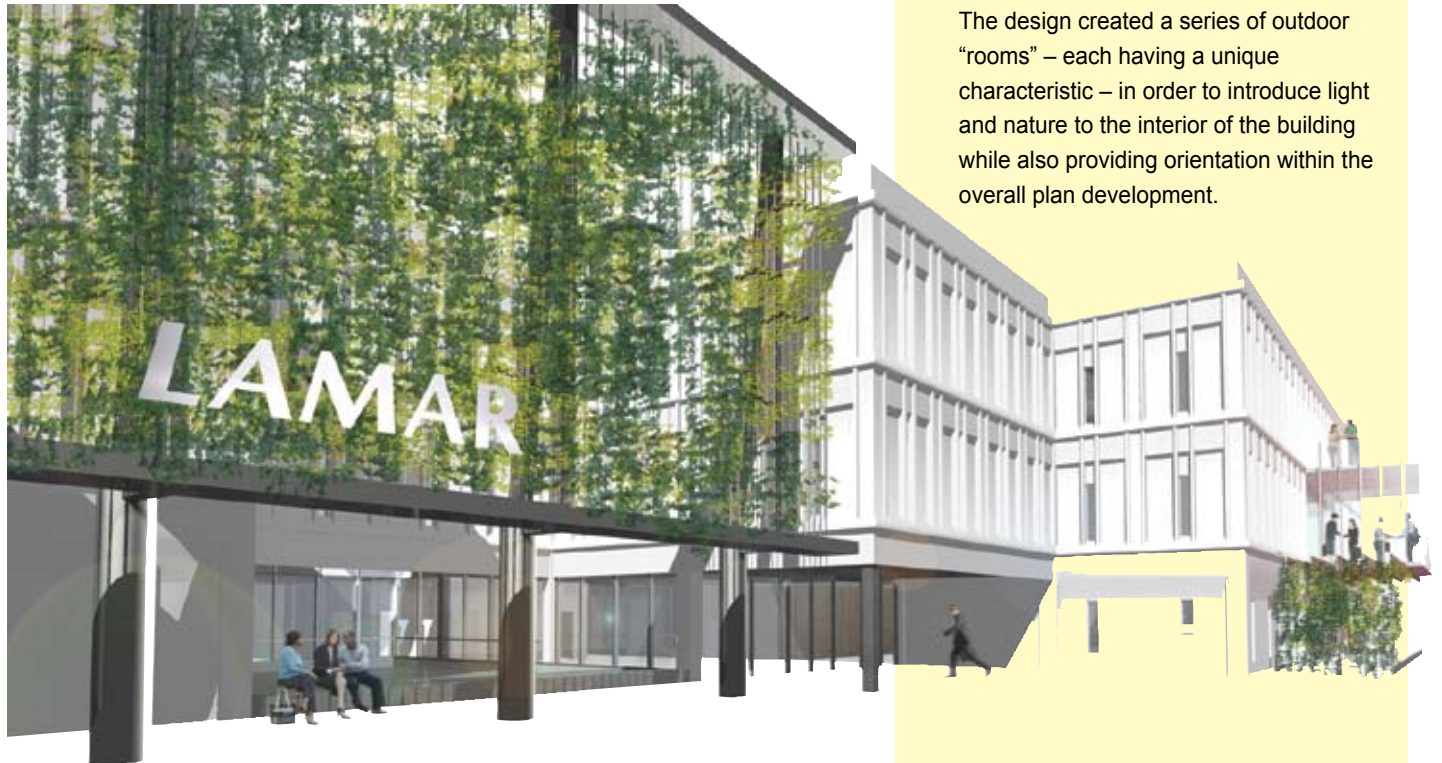
LAMAR ADVERTISING HEADQUARTERS

(Unrealized Project)

Eskew+Dumez+Ripple

This design of a new workplace for an advertising company's headquarters is a reaction against the standard office environment. Much of what we observe in creative environments is informal interaction. This design is structured to reinforce that culture of openness.

Eskew+Dumez+Ripple radically altered the internal configuration of a 1970's era data center while leaving the exterior essentially unchanged.



The design created a series of outdoor "rooms" – each having a unique characteristic – in order to introduce light and nature to the interior of the building while also providing orientation within the overall plan development.

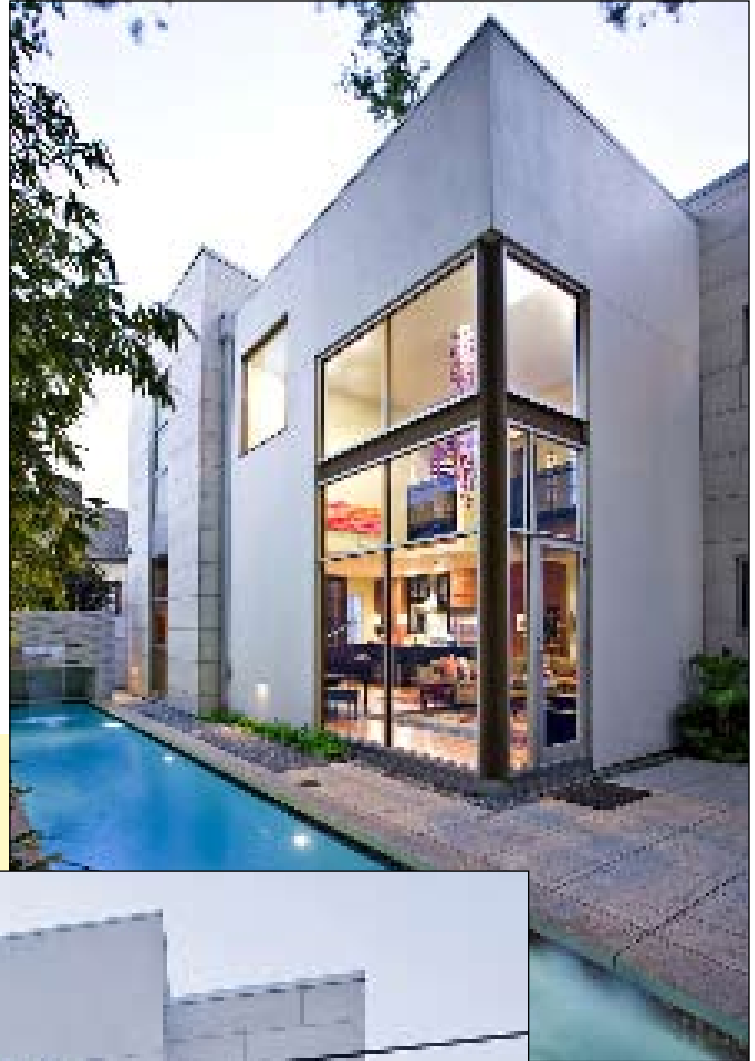
Honorable Mention Awards

THE CRUTCHER RESIDENCE

Wayne Troyer Architects

The project consisted of the construction of a new single-family residence in Uptown New Orleans. This two-story residence contains a double height living space that is flanked by two large volumes, one of which contains a small tower with access to a rooftop terrace. Entrance into the home is through a private courtyard. The building is constructed of wood framing on a raised slab, with selected steel members.

The glazing components of the home include fixed and operable architectural aluminum windows, aluminum storefront, and a custom wood + glass entry door. Interior features include a spiral stair for access to the roof terrace, semi-custom kitchen cabinetry, and custom bathroom vanities.



Members Choice Award

OneEleven

Remson/Haley/Herpin Architects, APAC

OneEleven is a multi-use (commercial and residential) infill project in the resurging downtown area. This project had a narrow and challenging site and was carefully designed to complete/reinforce many of the design initiatives already established on the city block. The building steps back and reduces in massing to respond to the historic character and proportion of the Third Street Arts and Entertainment District. The projects also seek to activate the public realm by placing commercial/retail space on the ground floor, and varied outdoor living spaces are created for the residents.





SCENES FROM THE 2009 CONFERENCE



AIA Traveling Fellowship winner 2009 ULL Architecture graduate

By Kristi Bailey

Winning the AIA Louisiana Traveling Fellowship was the single greatest experience of my life up until now. For that, I am incredibly grateful. I strongly believe in socially responsible architecture. Successful architecture is architecture that envelops the social, cultural, and environmental factors into its design. Furthermore, I am a advocate for global relief architecture.

Starting in Africa and ending in India, this trip was solely about understanding the people of the informal settlements in their culture, their survival, and their needs. Walking through the shacks, meeting the people, listening to their stories, and learning about their way of life, it was inspiring to see their hope and belief that change would come one day.

Upon arriving in Mumbai, I met up with a group of Americans traveling to Bagelkot to start an India Children's Academy. I had planned on assisting them in simply painting their newly rented building for their orphanage. However, as I got off the plane and sat next



to the director, she said, "Do you have your computer and any cad program?" I said yes, to which she replied, "We lost the building we were supposed to rent and therefore we need you to pick a site, meet with the contractors, learn the typical construction of Indian buildings, and design an orphanage for us in eight days so we can have a groundbreaking ceremony before we leave." I sat there in shock and quite honestly a little fear at first. Referencing Pierre's quote, I realized this was my chance to help make a small difference and so with the help of my husband, a fellow architecture graduate, we designed an orphanage that is currently under construction on the top of a hill in the middle of no where outside Bagelkot, India.

While most of my trip was filled with meetings, interviews, and township tours, the India Children's Academy was a chance to get our hands dirty and actually finish out the trip

knowing we had left something behind. I cannot begin to describe the moment I stood on top of the hill looking at the place where this orphanage would be built.

As the contractor performed their traditional groundbreaking ceremony, I just stood there

completely in awe of what was happening in my life at that very moment. This trip was an unbelievable learning opportunity, and I do not take it for granted. I am incredibly humbled that the AIA Louisiana gave me this opportunity.





Team BeauSoleil

Team BeauSoleil tops in market viability, People's Choice Contests

The BeauSoleil Louisiana Solar Home, designed and built by architecture students with the University of Louisiana at Lafayette, placed first in the Market Viability Contest and the People's Choice Contest in the U.S. Department of Energy Solar Decathlon in Washington, DC.

Team BeauSoleil designed for Louisiana residents who face harsh summers and hurricanes. "The (BeauSoleil) house hit on all cylinders," said Joyce Mason, Market Viability judge and vice president for marketing with Pardee Homes. "We were so impressed with the degree to which the team listened to their market. They didn't impose their ideas or try to infer them upon their residents."

The team is one of 20 university teams from across the globe competing in the Solar Decathlon on the National Mall. Team BeauSoleil is the only team from Louisiana to ever participate in this contest, held every two years.

"We knew from the beginning that if we couldn't bring this home to the people of Louisiana, we wouldn't accomplish anything," said Gretchen Lacombe Vanicor, BeauSoleil project manager. "We paid a lot of attention to our Cajun culture and produced a product that is viable." The house is designed to withstand hurricane-force winds and to be totally self-sufficient, which makes it especially ideal for coastal environments.

It also reflects key elements of Louisiana's rich culture, including its world-famous Cajun cooking. At the same time, it represents an architectural heritage that developed after Acadians, who were exiled from Nova Scotia by the British in the 1700s, settled in south Louisiana. The result is a simple, modest, but highly functional 800-square-foot structure.

The BeauSoleil Home design incorporates several aspects of early Cajun cottages. For example, it emphasizes wide exterior porches for social interaction and casual entertaining, as well as movable exterior doors in the "dog-trot" that make access to the outside easy. The home also has a large kitchen that is the cultural center of the home. Good conversation and great food, important elements of Louisiana's culture, flow naturally from this functional space.

This structure accommodates Louisiana's sometimes-challenging climate. Long, hot summers are the norm, so the BeauSoleil Home takes advantage of natural breezes and utilizes several dual-purpose shutters, while collecting its own water and generating more energy than it uses.



ULL architecture students celebrate after winning the Market Viability contest.

Architect Ronald B. Blicht, FAIA, FACHA, elected regional director of National Council of Architectural Registration Boards

Ronald B. Blicht, FAIA, FACHA, of New Orleans, has been elected Regional Chair of the National Council of Architectural Registration Boards (NCARB). As the director for Region 3 (Southern Conference), Blicht represents the U.S. jurisdictions of Alabama, Arkansas, Florida, Georgia, Louisiana, Mississippi, North Carolina, Puerto Rico, South Carolina, Tennessee, Texas, and the Virgin Islands. Blicht was also appointed Chairman of NCARB's Committee on Examination, and will serve on the Committee on Procedures and Documents.

Ron's involvement with NCARB began in 1994 with his appointment to the Louisiana State Board of Architectural Examiners. He has served twice as Chair of the Architectural Registration Examination (the professional examination that all licensed architects in the US and Canada must successfully complete for licensure). He is serving his second term on the Louisiana licensing board.

A graduate of the University of Notre Dame, Blicht is President of Blicht/Knevel Architects in New Orleans, a nationally respected architectural firm founded 50 years ago by his father, J. Buchanan Blicht, FAIA. The firm became Blicht Knevel Architects in 1997.

Blicht/Knevel Architects specializes in Healthcare, Senior Living, Religious and Educational facilities. The firm has won numerous Design Awards for outstanding design over its 50-year history. Current projects by Blicht/Knevel Architects include the new Louisiana State University Academic Medical Center in New Orleans, Xavier University's College of Pharmacy in New Orleans, the new St. Thomas Catholic Church in Long Beach, MS, the new Holy Cross School in New Orleans, and a new student center for McGill-Toolen Catholic High School in Mobile, AL.

About NCARB

NCARB comprises the architectural registration boards of all 50 states as well as those of the District of Columbia, Puerto Rico, Guam, and the Virgin Islands. NCARB assists its member registration boards in carrying out their duties and provides a certification program for individual architects.

Construction code changes listed

Effective June 22, 2007, plans and specifications for every commercial building built or remodeled in the State of Louisiana must be drawn in accordance with the requirements of the revised Commercial Building Energy Conservation Code.

ANSI/ASHRAE/IESNA 90.1 - 2004 edition, is the applicable Energy Standard for buildings except low-rise residential buildings, and the IECC 2006 edition is the applicable standard for low-rise residential buildings. Code compliance materials can be obtained from the U.S. Department of Energy's website.

There are several recent changes to the LA State Uniform Construction Code, as follows:

The LA One- and Two-Family Supplement to the 2006 International Mechanical Code is now in effect (applicable to detached one- and two-family dwellings and multiple single-

family dwellings (townhouses) not more than three stories high with separate means of egress and their accessory structures.

The 2007 Supplement to the International Mechanical Code, Section 403 is now in effect (Section 403, 2006 edition). The 2008 edition of the National Electrical Code goes into effect on Jan. 1, 2010.

In addition, the Technical Codes and Advisory Committee is now reviewing the 2009 editions of several codes for adoption statewide. The codes being reviewed are: International Building Code, International Residential Code, International Existing Buildings Code, International Mechanical Code, and International Fuel Gas Code.

Anyone with questions or comments regarding these changes can address them to code council administrator, Denise Jobe at Denise.Jobe@dps.la.gov

Licensing renewals now done online

The Louisiana State Board of Architectural Examiners has announced that 2010 licensing renewals for architects will be conducted online beginning November 1, 2009. Current licenses expire December 31, 2009.

There will be no paper renewal forms mailed. Please make sure your mailing information is correct as you will be sent a postcard and an email reminding you of the deadline, but it is your responsibility to make sure you renew whether reminders are received or not.

Once the process is completed online, you will be able to print your certificate/wallet card if you so choose. To update, renew or print certificate, you will again need to use your registration number and password (pin) will be last four numbers of your SSN.

AIA LA gets component retention award

AIA Louisiana recently received a Component Retention Award from AIA National for achieving 96% architect member and 83% associate member retention for 2009. Thanks to all our members and associate members for helping make this award possible!