

Program Summary:

The project is a new church campus with sanctuary, administrative area, kitchen, family life center, classrooms, maintenance building, bell tower, and new 20 acre site.

Program Statement:

The planning of this church included a healthy respect for traditional gothic orientation with its Narthex on the West and the Apse on the East. The Transepts cross this major axis north and south. An octagonal shaped Sanctuary occupies the intersection of the cross plan, with the Altar being the center of this Rotunda space. Glass separates the Altar from the Daily Chapel at the East end of the building. The Tabernacle floats in glass serving both the main Sanctuary and the Daily Chapel. This satisfies modern doctrine in requiring only one tabernacle within a church. The stained glass at the East end of the church beyond the Altar represents the "Resurrection" of Christ Jesus. The structure chosen was tilt wall concrete with wood trusses in a gothic form. The intersection of the cross was given the octagonal shape to produce the main Rotunda. 8 large poured in place concrete columns support the entire shape. These columns and facets of the wall represent eight days, a biblical reference to Christ's resurrection. The North Transept wall has a floating custom designed statue of the Blessed Virgin Mary with a custom designed stained glass piece surrounding her. The South Transept wall has a floating custom designed statue of Jesus the Good Shepherd with a custom designed stained glass piece surrounding him. The Bell Tower represents a "Beacon of Faith" and is meant to cast light across the front reflecting pond for all to see the light of Christ Jesus in the world.

A-305.01

Building Area: (sf)
40,354 sf

Cost per Square Foot:
\$215/sf

Construction Cost
\$8,687,885.00

Date of Completion:
April 02, 2014

A-305.02



View looking East from Narthex towards the Altar. The Baptismal Font is in the foreground with the Tabernacle and the "Resurrection" stained glass window at the far end behind the Daily Chapel. Radial wood pews were built to rest underneath the octagonal rotunda space. The Altar is the center of the circular plan of the Sanctuary.



View looking East through the glass wall separating the Altar and Daily Chapel with the Tabernacle in the foreground. The "Resurrection" stained glass window and Risen Cross are in the background at the East end of the Church.

A-305.04



View looking West towards the Narthex with the "Rose" stained glass window high in the wall. The Baptismal Font is in the foreground. The flooring is integral colored polished concrete with a stained band around the Baptismal Font and leading to the Altar.



View looking West from Daily Chapel through glass that separates the Daily Chapel and the main Sanctuary with the Tabernacle in view. The reflections in the glass are of the "Resurrection" stained glass window and the risen cross with the "Rose" stained glass window also in view in the background.



View looking Southeast with the “Jesus the Good Shepherd” statue and stained glass window in view on the right and the Altar and Daily Chapel on the left. The Choir area can be seen on the far left. The radial pew configuration can be seen along with the diagonal aisles that orient back to the center of the Rotunda space and the Altar.



View of the Arrival Court and entry to the Narthex from the West side of the building. The "Rose" window is visible at the West wall above. Concrete tilt-wall panels were used for the exterior wall construction with limestone veneer base and column cladding.

A-305.08



View of the South wall at the “Jesus the Good Shepherd” end of the Transepts. The Bell Tower is visible in the background. The Bell Tower rises from a circular court and has intersecting arches at the ground level.



View of the church from across the reflecting pond with the Bell Tower in the foreground. The circular court around the Bell Tower extends outward into the pond with a limestone wall dropping down below the surface of the water's edge. The walls of the Bell Tower and the church were cast on the ground from concrete and erected into place. The nearest wall of the church is the East wall where the "Resurrection" stained glass window surrounds the "Risen Cross" in the Daily Chapel. The cupola at the center of the cross and the Rotunda is visible on the rooftop of the church. This is the intersection of the Transepts and the center of the circle and the octagon of the Sanctuary.

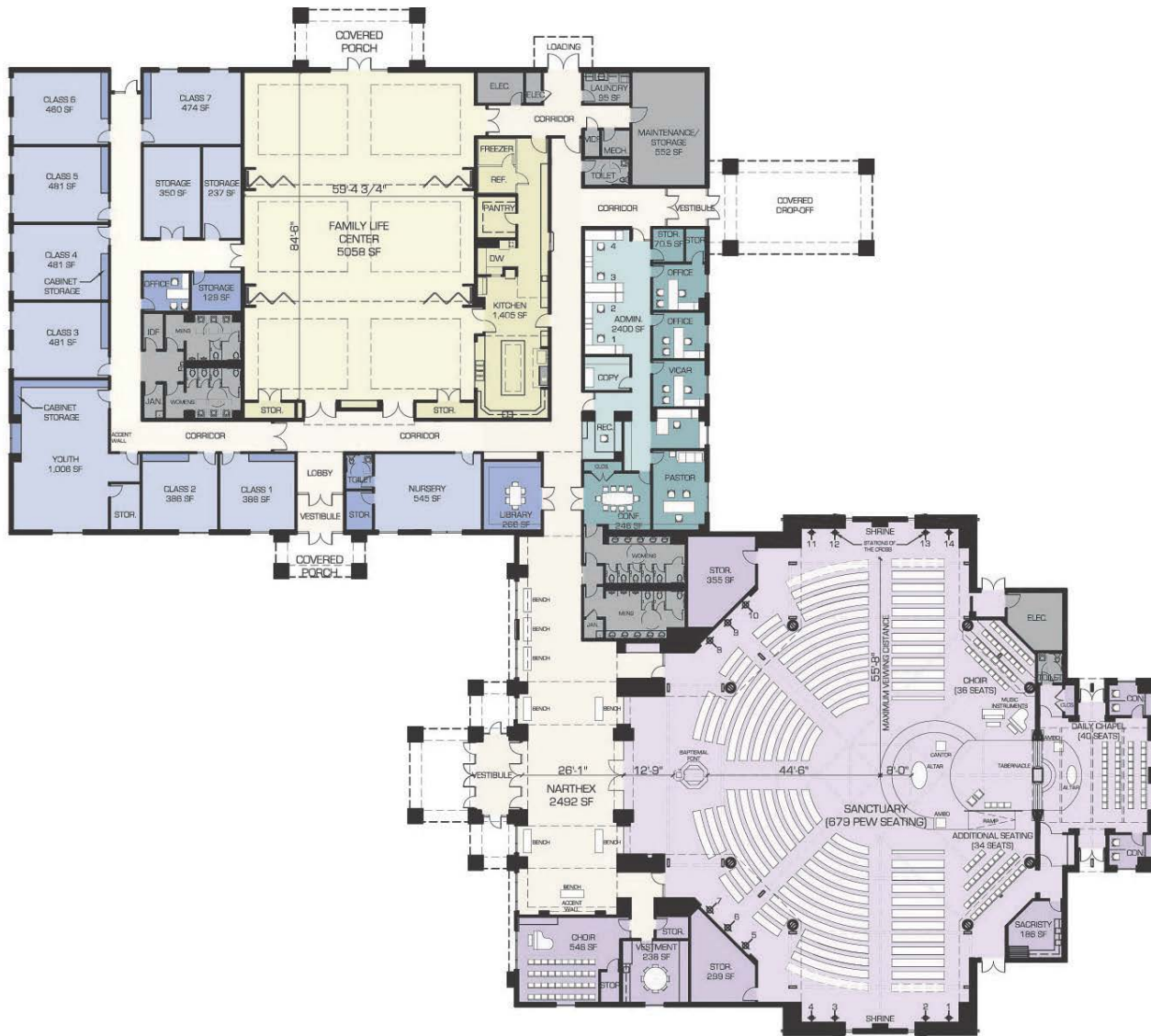
A-305.10



Straight on view of the Bell Tower with the "Resurrection" stained glass window visible through the archway. The Tower is called the "Beacon of Faith" by the church community as it emits light at night that reflects on the water.



Site Plan showing radial parking layout with the Bell Tower and the Arrival Court at each end of the major East and West axis that centers the Church. The water features were created by excavating fill material that was used under the paved areas to reduce the amount of imported select fill material. Future Expansion has been planned.



Project Name:
St. Jude Catholic Church New Campus

Project Location:
Benton, Louisiana

Owner/Client:
St. Jude Catholic Church
Representative: Fr. Pike Thomas

Architect(s) of Record:
Prevot Design Services
601 Spring Street
Shreveport, LA 71101

Project Team:
Mark Prevot
Lori Arnold
Sarah Kathryn Delphin
John Selloriquuez
Ronnie Duvall

Landscape Architect:
N/A

Consultants:
Civil Design Group, LLC
McCown Engineering, LLC
Purtle + Associates, L.C.
dP(A) Accoustics, Inc.

General Contractor:
Boggs & Poole Contracting Group, Inc.

Photographer(s):
Eric Sorensen: slides 2-6.
Sarah Kathryn Delphin: slides 7-10.

A-305.x

Credit Slide